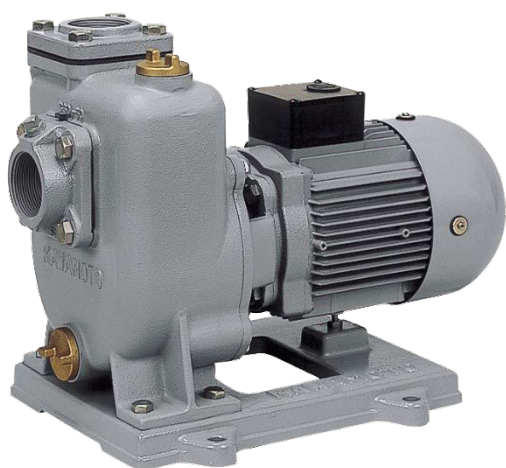


GS02/3-C

GS2/3-C

GS-M

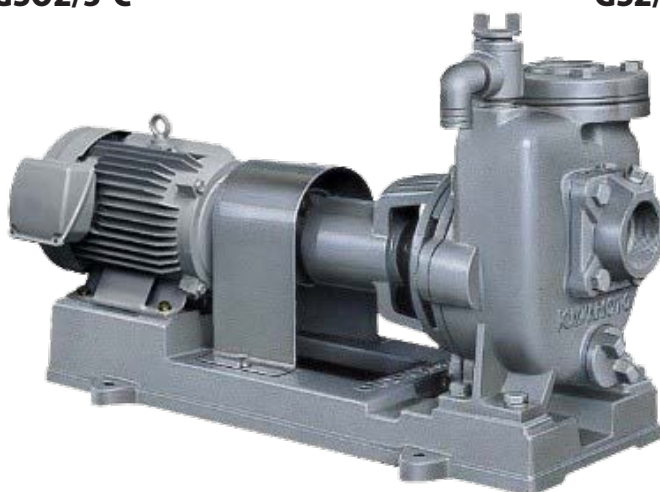
KAWAMOTO SELF-PRIMING PUMP
2 POLES / 50 Hz



GS02/3-C



GS2/3-C



GS-M

GSO2/3-C BORE SIZE 40~50MM

APPLICATIONS AND FEATURES

■ APPLICATIONS

- Self priming type
- Snow melting
- Agriculture
- Industry
- Cooling water

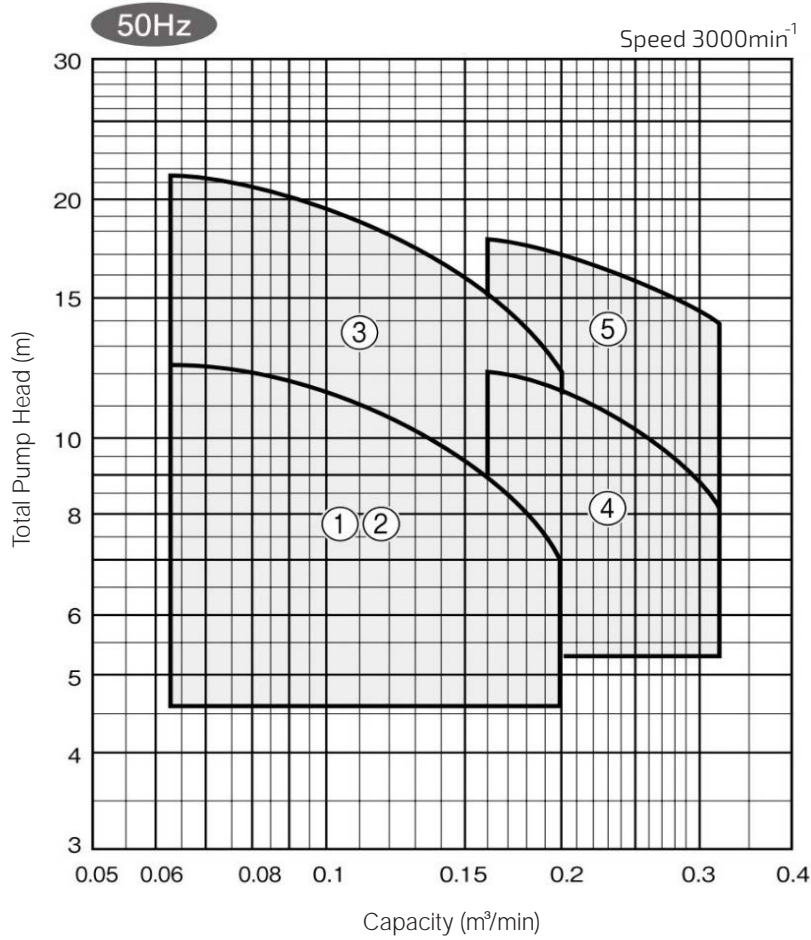
■ FEATURES

- Superior suction performance.
- Strong and durable construction against sand by adopting special kind mechanical seal.
- Excellent performance make it possible to pump up much water even from draw down well.
- Back pull out construction.
- Semi-open impeller enable stuck free pumping works.
- Long life and strong against dust and humidity because TEFC motor is standardly adopted.

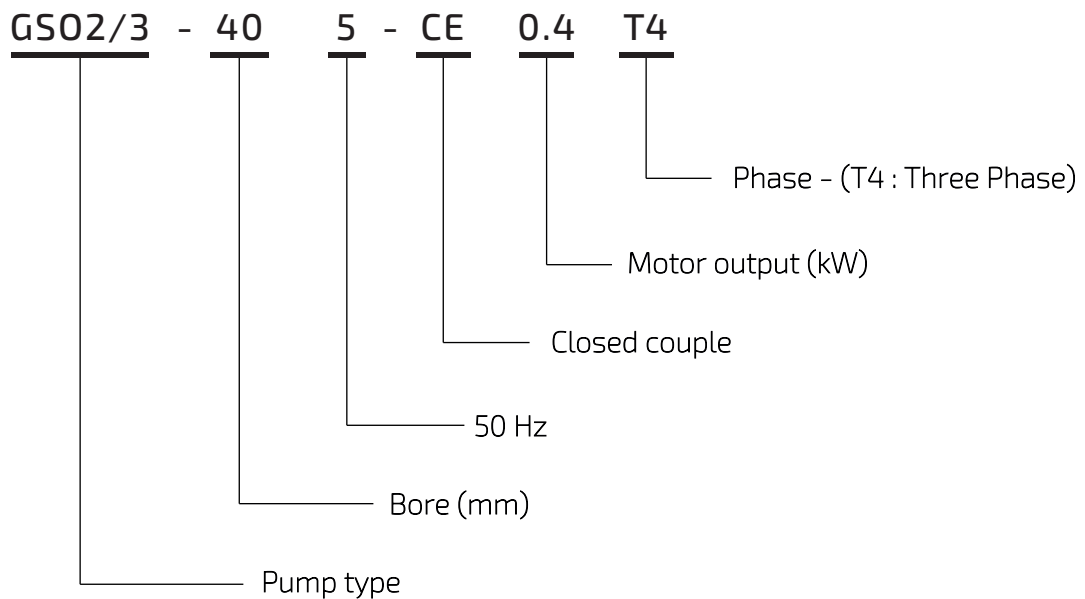
STANDARD SPECIFICATIONS

Description		Model : GSO2/3-C
Applicable Liquid		Clean water
Liquid Temperature		0 ~ 40 °C (however there should be no freezing)
Main Pump	Casing	Cast iron
	Impeller	Bronze or Resin or SCS13 (Semi-opened impeller)
	Shaft	SUS304
Motor	Speed	2900 rpm
	Protection	IP54, TEFC
Construction	Shaft Seal	Mechanical seal Sic x Carbon

PERFORMANCE CHART (GSO2/3-C)



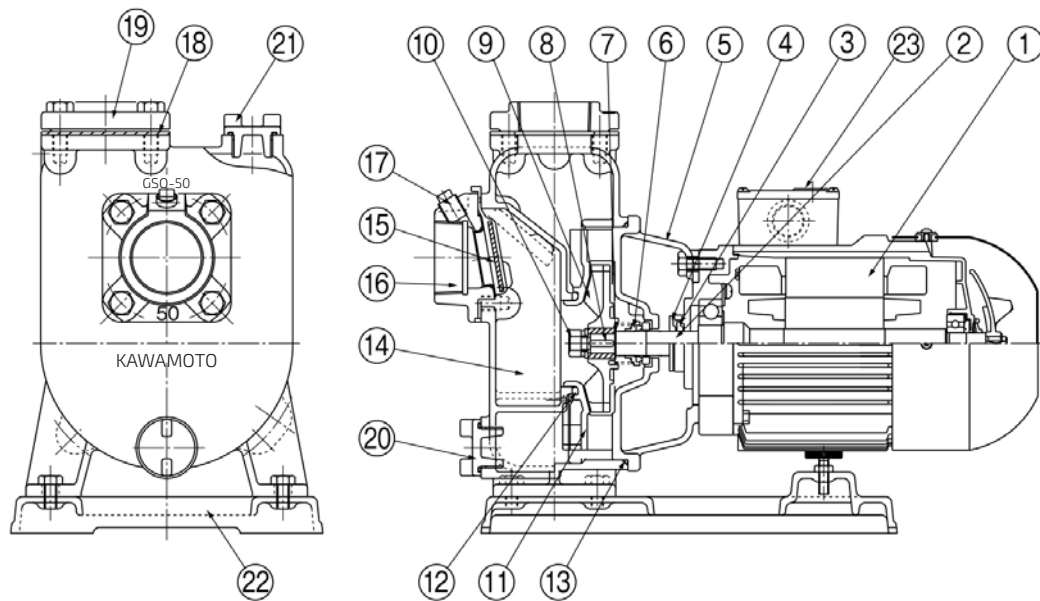
MODEL CODE



SPECIFICATION TABLE

No.	Bore (mm)	Model	Motor (kW)	Performance			
				Capacity (m ³ /min)	Total Head (m)	Capacity (m ³ /min)	Total Head (m)
1,2	40	GS03-405-C0.4T4	0.4	0.063	12.5	0.2	7
3		GS02-405CE0.75	0.75	0.063	21.5	0.2	12.2
4	50	GS02-505CE0.75	0.75	0.16	12	0.32	8
5		GS02-505CE1.5	1.5	0.16	17.8	0.32	13.8

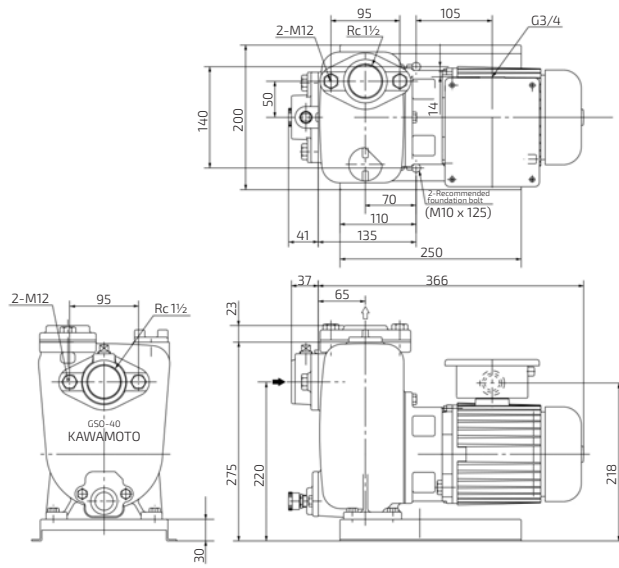
SECTION DRAWING



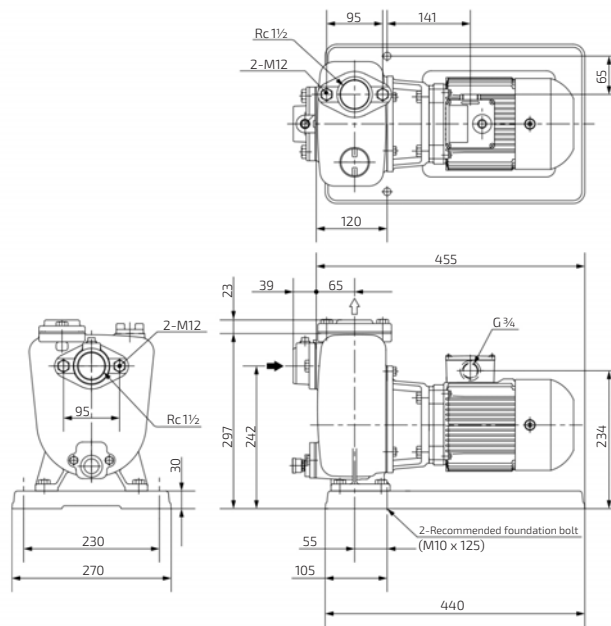
No.	Part name	Material	Note	No.	Part name	Material	Note
1	Motor	-		13	O-Ring	Rubber	
2	Shaft	SUS304+S35C		14	Casing	Cast iron	
3	Deflector	Rubber		15	Check valve	Rubber	
4	Deflector	Rubber		16	Flange with valve sheet	Cast iron	
5	Casing cover	Cast iron					
6	Mechanical seal	Ceramic x Carbon		17	Plug	SWCH10K	
7	Shim	SUS304		18	Packing	Rubber	
8	Key	SUS403		19	Flange	Cast iron	
9	Impeller	SCS13 or Bronze or Resin	Semi-open	20	Plug	C3771BD	
10	Nut	SUS304		21	Plug	C3771BD	
11	Guide vane	PA6 or Bronze		22	Baseplate	Cast iron	
12	O-Ring	Rubber		23	Protector switch	-	

PUMP DIMENSION

Bore : 40mm(0.4kW)
Weight 0.4T : 23kg

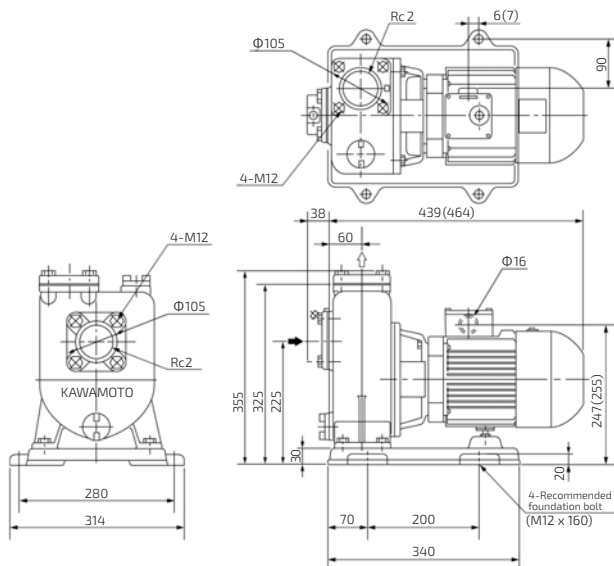


Bore : 40mm(0.75kW)
Weight : 34kg



Bore : 50mm
Weight 0.75kW : 31kg
1.5kW : 40kg

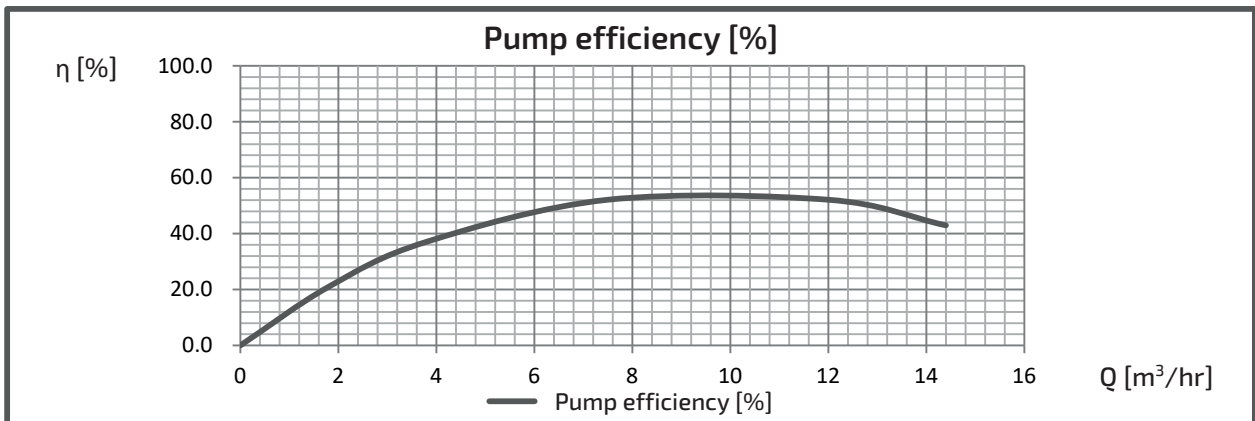
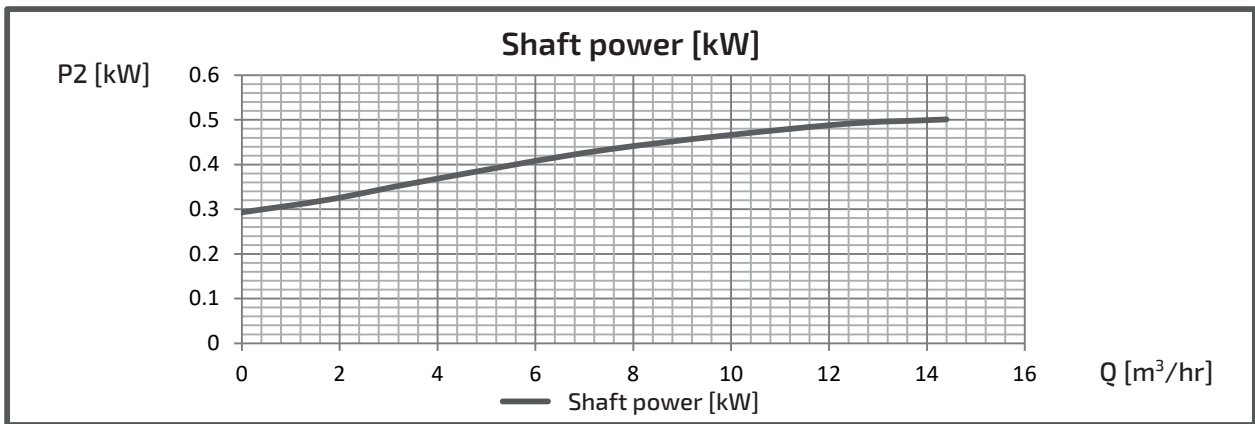
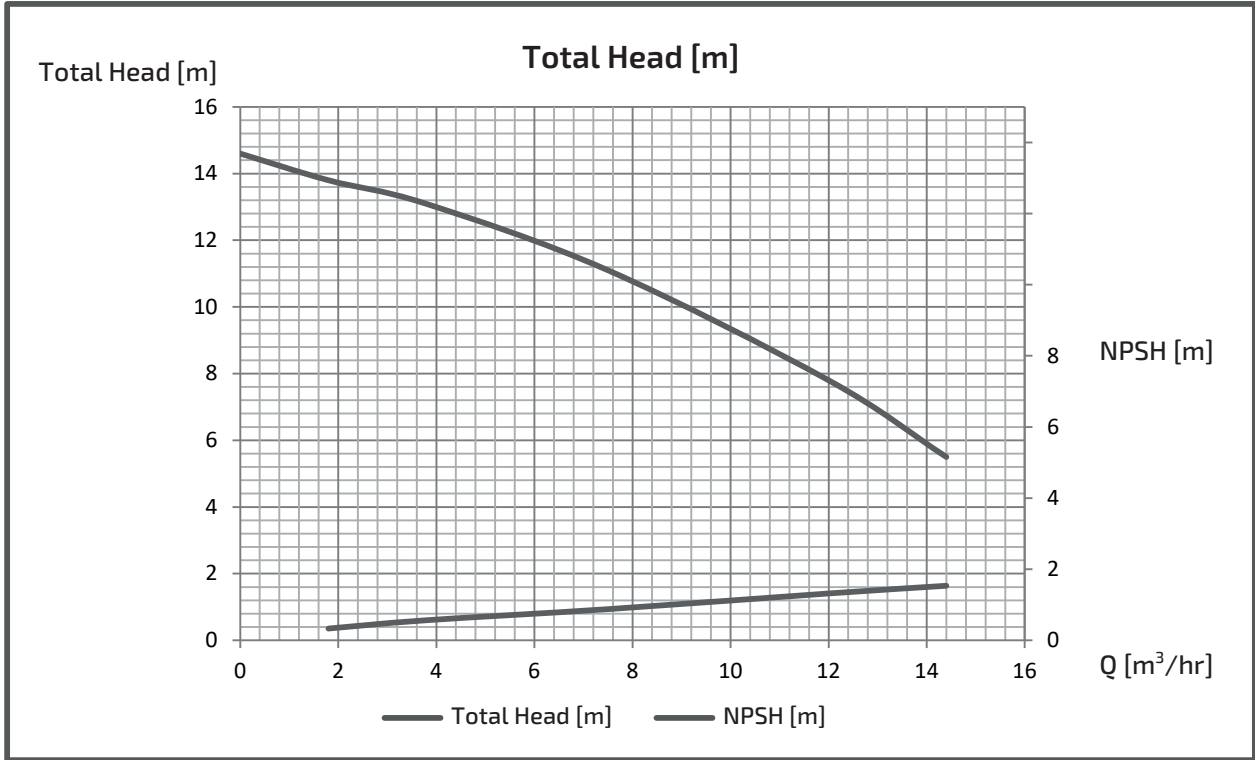
The number in () indicates when it's 1.5kW.



EXPECTED PERFORMANCE CURVE

MODEL : GSO3-405-C0.4T4

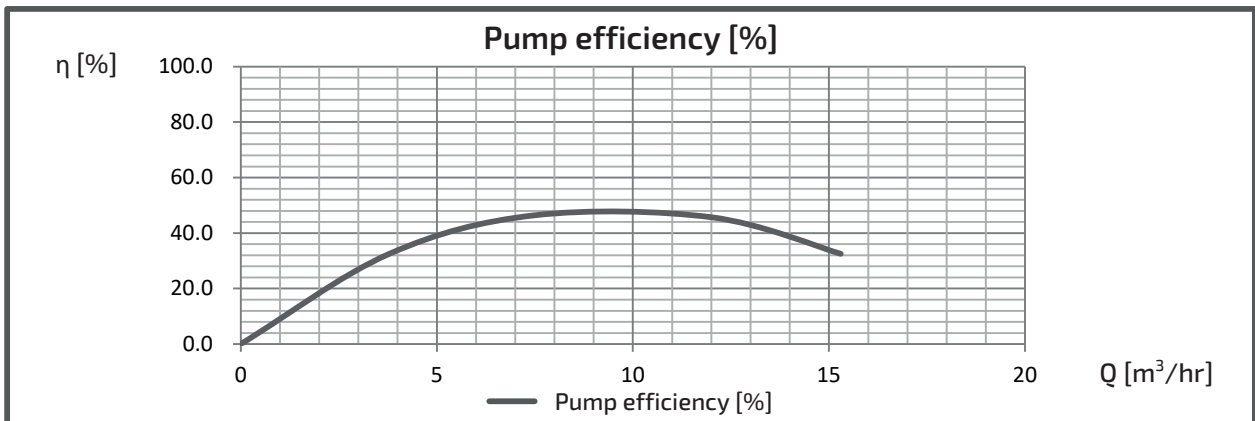
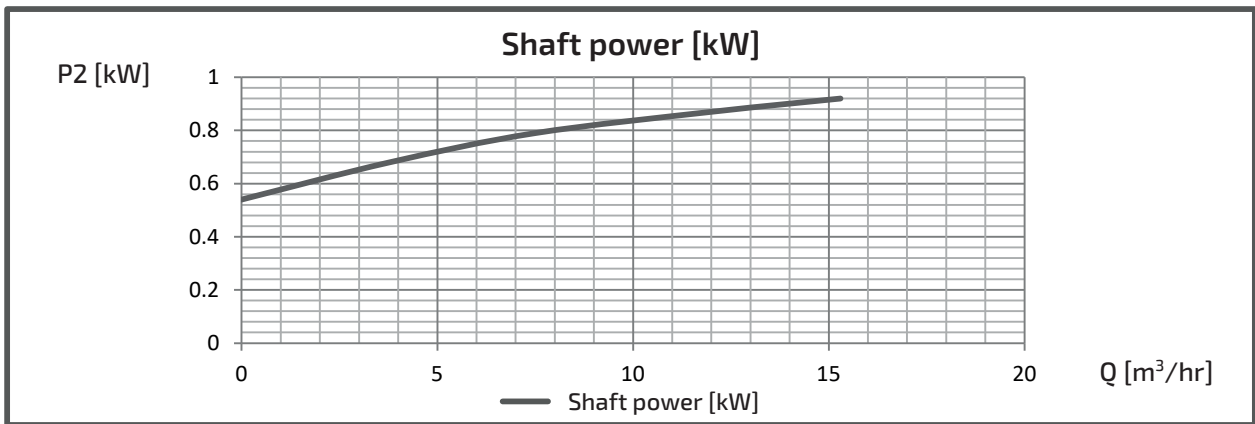
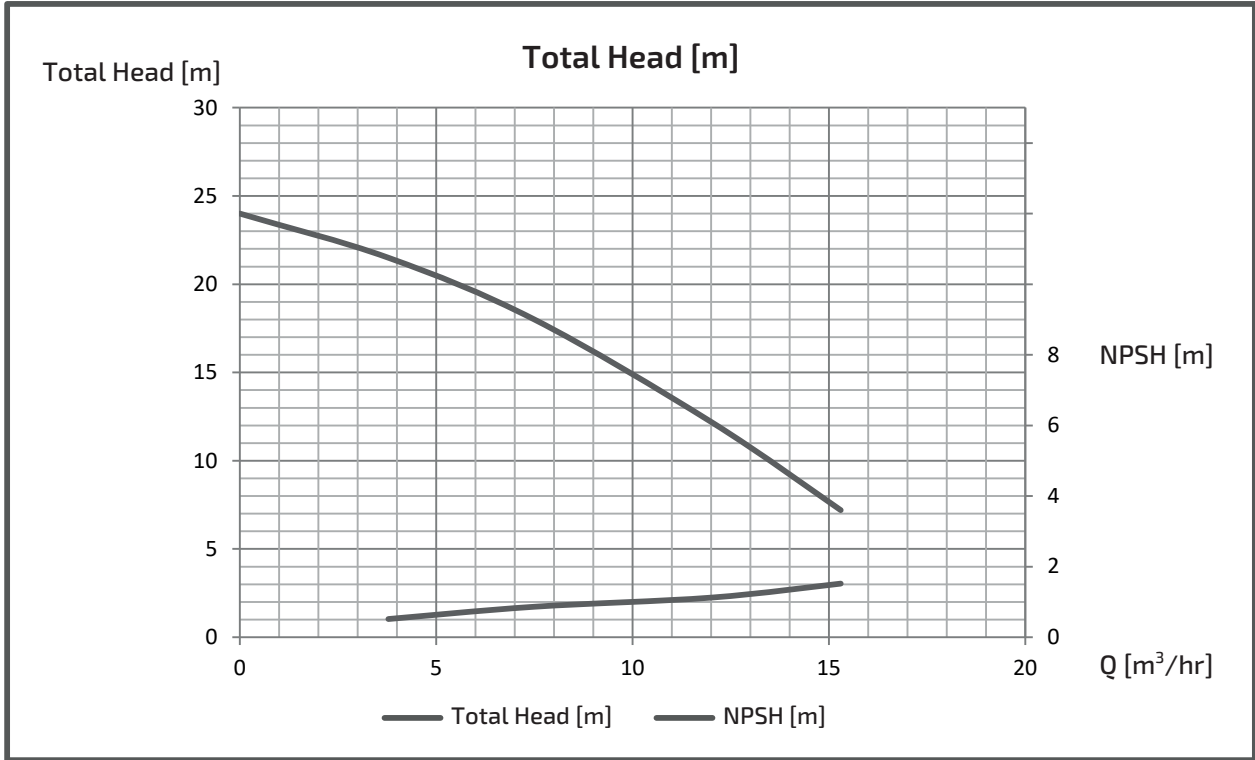
■ PERFORMANCE CURVES



EXPECTED PERFORMANCE CURVE

MODEL : GSO2-405CE0.75

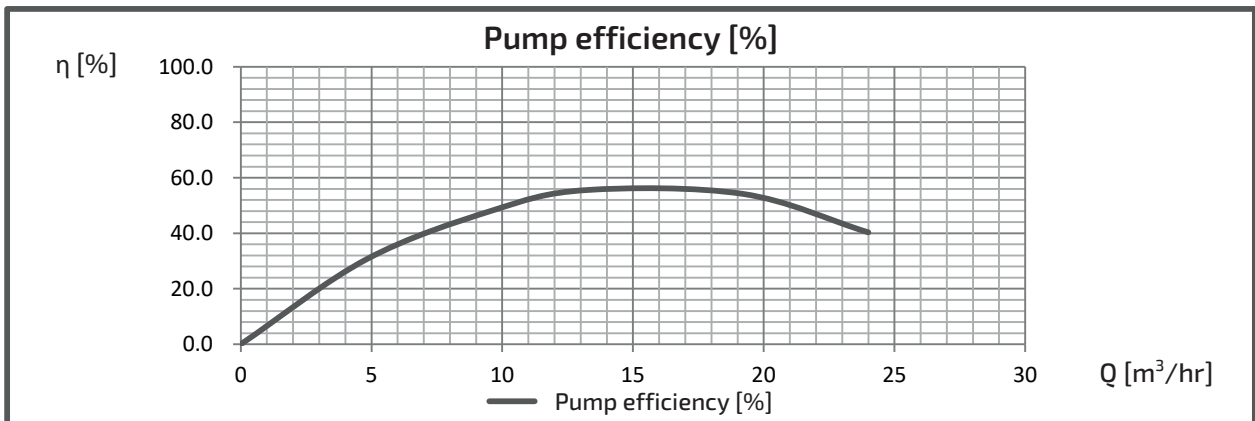
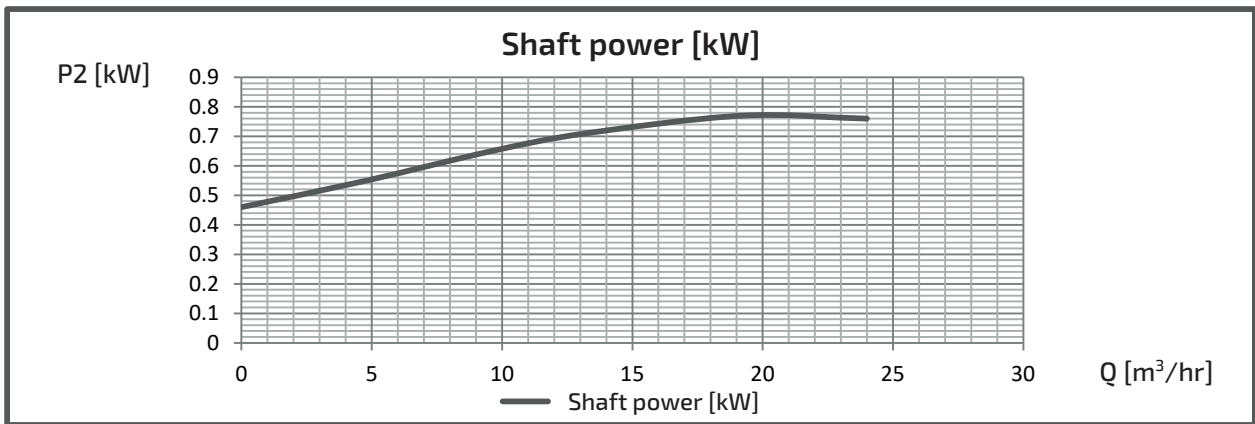
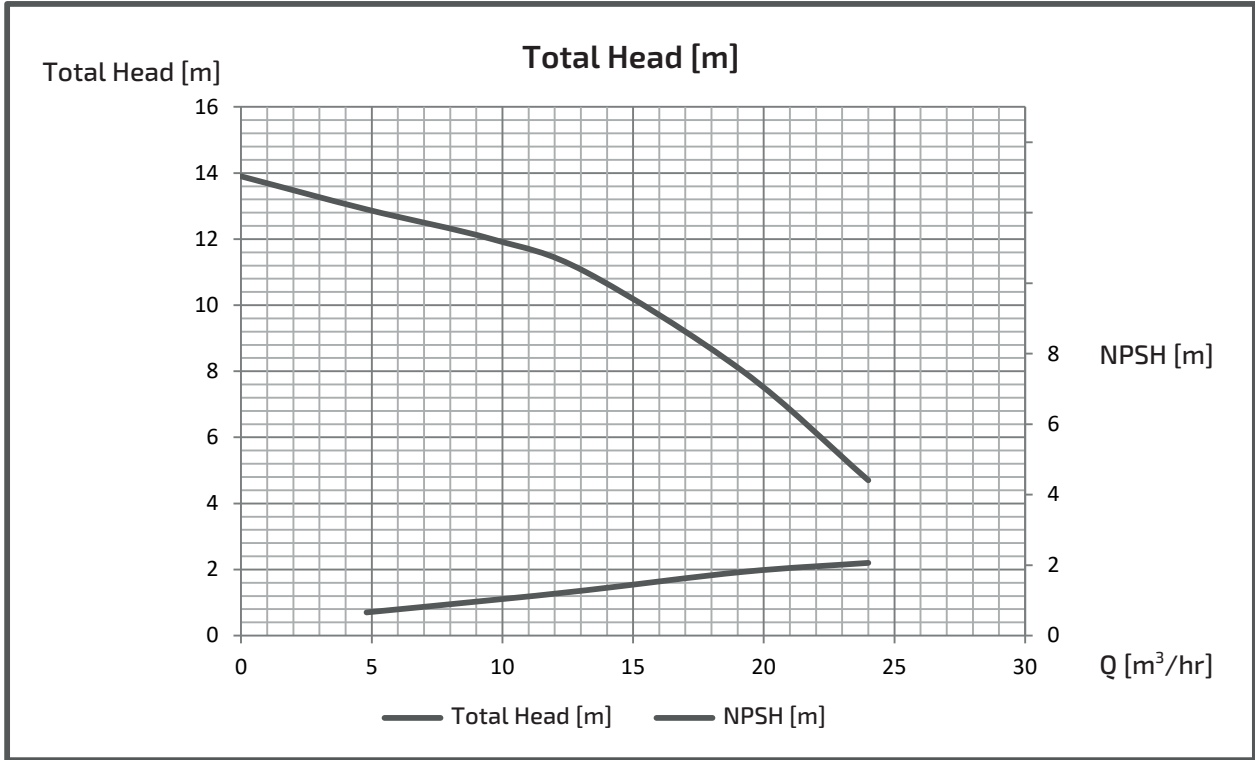
■ PERFORMANCE CURVES



EXPECTED PERFORMANCE CURVE

MODEL : GSO2-505CE0.75

■ PERFORMANCE CURVES



EXPECTED PERFORMANCE CURVE

MODEL : GSO2-505CE1.5

■ PERFORMANCE CURVES

